

植物墙

PLANT WALL



设计公司: Jardins de Babylon

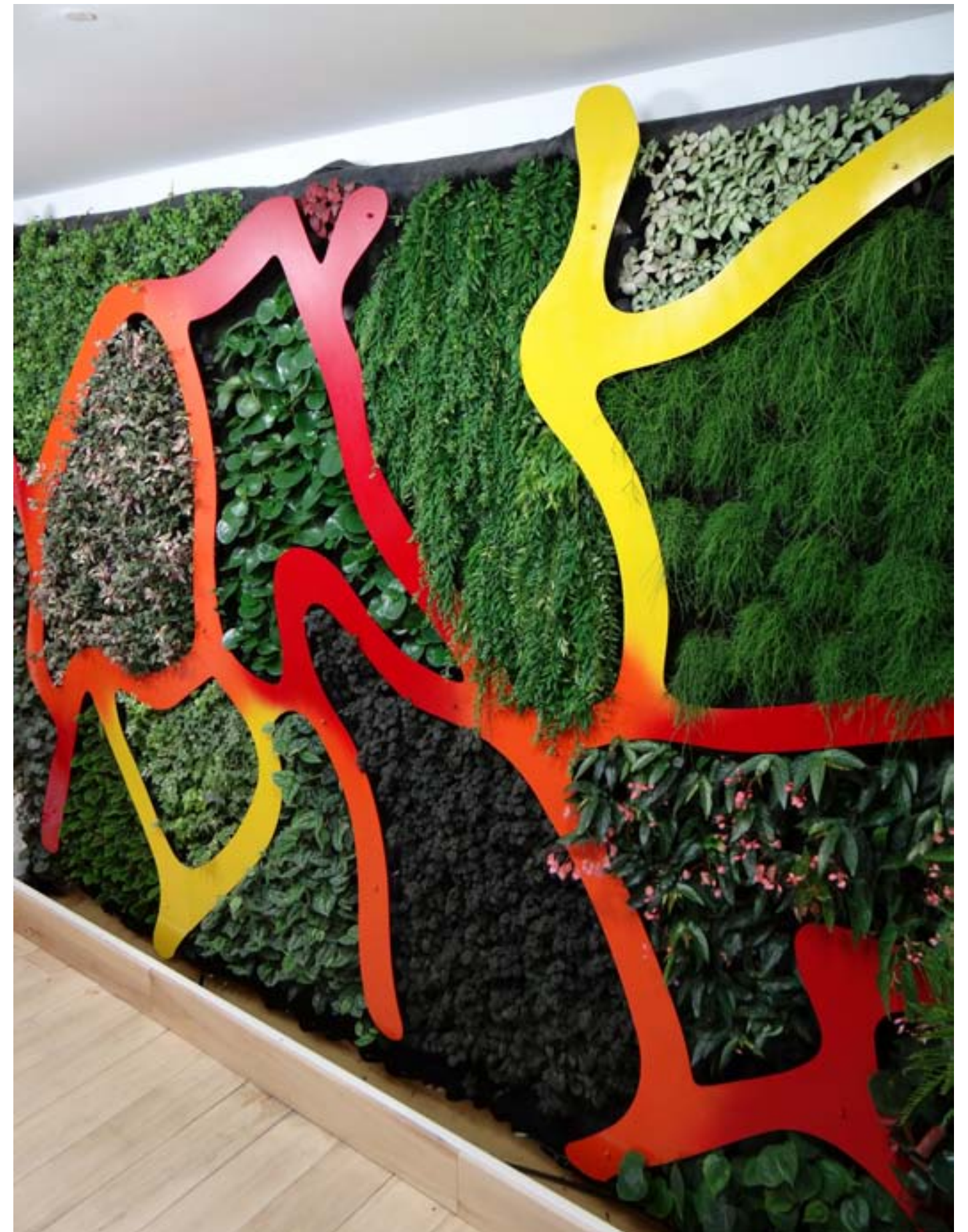
项目面积: 12 m²

项目地址: 法国巴黎的 Jardins de Babylone 公司的植物展廊

Design Company: Jardins de Babylon

Area: 12 m²

Site: The Galerie Verte, showroom of Jardins de Babylone, Paris, France





本项目的建筑设计与植物配置堪称是垂直绿化项目中的典范之作。受到漫画家墨比斯的启发，设计师完美地将蔬菜种植与金属融合在一起。

设计细节：

缤纷的漆料点缀流畅的曲线造型，蔬菜植株镶嵌在不锈钢钢架中，这些设计元素彼此相连，浑然天成。设计师正是在这个有限的室内种植空间内实现了最大程度的植物多样性，使各式各样的植物与丰富的油漆颜色交织出独特的艺术美感。

本项目所运用的不锈钢钢架（型号为 306）均采用激光切割并涂料喷漆技术打造而成。正是这些钢架将种植区分割成多个部分，构造整个项目的主结构。
It is here a perfect design and plant associating example. Inspired by the organic drawing of Moebius, this wall is a symbiosis between the metal and the vegetable.

Design Details:

Mixture of the forms and colors, vegetable and sheet steel, base themselves one to another, become entangled not to make more than one. It is here an association of a big diversity of house plants with restricted development, allowing keeping an aesthetics made by various forms of foliage and by color.

The sheet steel in stainless steel 306 is cut in the laser and colored in the spray paint (red, yellow, orange). It bounds the various sections of plant.

植被构成：	Plants List:
虎耳草	Saxifraga stolonifera Curt.
薜荔	Ficus pumila Linn.
榆树	Ulmus pumila L.
网纹草	Fittonia verschaffeltii (Lemaire) van Houtte
皱叶冷水花	Pilea grandis Wedd.
豆瓣绿	Peperomia tetraphylla (Forst. f.) Hook. et Arn.
芒毛苣苔	Aeschynanthus acuminatus Wall. ex A. DC.
常青藤	Hedera nepalensis
星点藤	Spindapsus pictus ‘Argyraeus’
丝苇	Rhipsalis baccifera
紫鸭跖草	Tradescantia virginiana L
小叶喜林芋	Philodendron scandens
红爵士秋海棠	Begonia × erythrophylla



朱勒 & 吉姆酒店的植物墙

PLANT WALLS OF HOTEL JULES & JIM



设计公司: Jardins de Babylon

项目面积: 45 m²

项目地址: 法国巴黎 Gravilliers 大街 11 号朱勒 & 吉姆酒店 (邮政编号为 75003)

Design Company: Jardins de Babylon

Area: 45 m²

Site: Hôtel Jules & Jim, 11 rue de Gravilliers
75003, Paris, France



本项目最初是计划在酒店设计蔬果种植带而不是建造庭院。然而为了营造更加幽静的环境和设计更具创意的植物墙,设计师不得不向酒店经营者提出缩小蔬果种植带的面积的建议,以便更好地呈现这里的绿化景观。而在设计第二面植物墙的过程中,设计师延续了第一面植物墙的设计特色,使用玲珑冰花波浪形布局来打造一种连续性的图案效果。同时,蔬果种植带的设计理念与第一面植物墙是相同的。

设计细节:

第一面植物墙总长 30 m, 总宽 6 m, 总高 5 m, 设计师将铝制支架直接安装在墙壁以后, 嵌入聚氯乙烯面板, 那么整个架构就建立起来了。而它的灌溉系统包括滴灌设备和滴管控制器, 则完全安装在地底下。一年以后, 当安装第二面植物墙时, 灌溉系统也经过改造, 如今可以为两面植物墙提供灌溉。

The first idea of this project was to return of the vegetable in this space rather mineral where the Hôtel Jules & Jim raises two courtyards. The only constraint that we had was to propose to the customer a vegetable pallet consisted of foliage in a camaieu of green with a low development so allowing to create a more design vegetable atmosphere and serene in this closed space. During the realization of the 2nd plant wall in the following courtyard, we resumed the idea of the wave *Soleirolia soleirolii* (Req.) Dandy to create continuity in the design of the plant wall. The vegetable pallet was worked with the same concept as the first plant wall.

Design Details:

The first plant wall has a surface of 30 m of 6 m of length by 5 m of top put on brackets aluminium directly on the existing wall. The plates of PVC are then settled and the set up fabric. The irrigation system was placed in underground in a place intended only for the installation and for the control of the irrigation. During the installation of the 2nd plant wall, one year later, the irrigation system asked for changes to feed from now on both plant walls.

植被构成:

第一面植物墙:

花叶野芝麻

棕鳞耳蕨

花叶木藜芦

锦带花

虎耳草

垂吊风铃草

富贵草

玲珑冷水花

石楠

花叶蔓长春花

第二面植物墙:

玲珑冷水花

光叶林石草

圆叶柳穿鱼

垂穗苔草

南澳蓝色醉鱼草

老鹳草

常绿大戟

垂吊风铃草

Plants List:

1st plant wall:

Lamium galeobdolon 'Herman' s pride'

Polystichum polyblepharum

Leucothoe fontanesiana 'Rainbow'

Weigela florida (Bunge) A. DC.

Saxifraga stolonifera Curt.

Campanula poscharskyana

Pachysandra terminalis

Soleirolia soleirolii (Req.) Dandy

Photinia serrulata Lindl.

Vinca major L. cv. Variegata

2nd plant wall:

Soleirolia soleirolii (Req.) Dandy

Waldsteinia ternata (Steph.) Fritsch var.

glabriuscula Yu et Li

Linaria cymbalaria Mill.

Carex pendula Hudson, Fl. Angl.

Buddleia (Nanho Blue)

Geranium wilfordii Maxim.

Euphorbia characias

Campanula poscharskyana

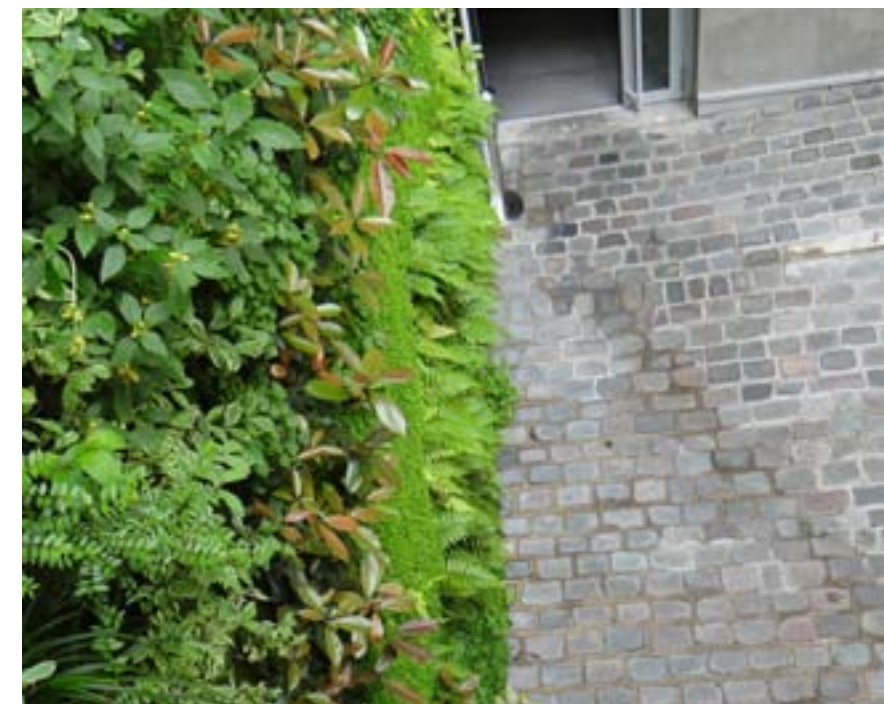




Tableau de floraison du mur végétal : Hôtel Jules et Jim

Nom des plantes	Hauteur	J	F	M	A	M	J	J	A	S	O
1 - Fuchsia coccinea	25cm										
2 - Lonicera xylosteum	30cm										
3 - Campanula medium	30cm										
4 - Vinca major	30cm										
5 - Polesticum poliochrysum	50cm										
6 - Saxifraga umbrosa	30cm										
7 - Pachysandra terminalis	25cm										
8 - Tilia grandifolia	40cm										
9 - Hebe	5cm										

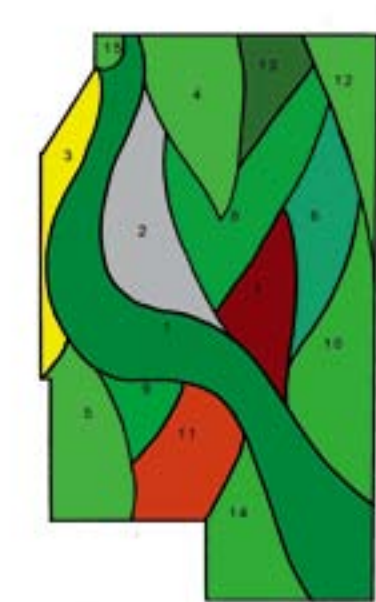


Tableau de floraison du mur végétal

Nom des plantes	Hauteur	J	F	M	A	M	J	J	A	S	O
1 - Fuchsia coccinea	25cm										
2 - Lonicera xylosteum	30cm										
3 - Campanula medium	30cm										
4 - Vinca major	30cm										
5 - Polesticum poliochrysum	50cm										
6 - Saxifraga umbrosa	30cm										
7 - Pachysandra terminalis	25cm										
8 - Tilia grandifolia	40cm										
9 - Hebe	5cm										

01 - Sans fleur
02 - Fleurs
03 - Feuilles



Pachysandra terminalis, Lonicera xylosteum 'Herman's pride', Campanula medium, Vinca major hirsuta, Saxifraga umbrosa, Tilia grandifolia, Epimedium yunnanense, Tiarella cordifolia, Hebe



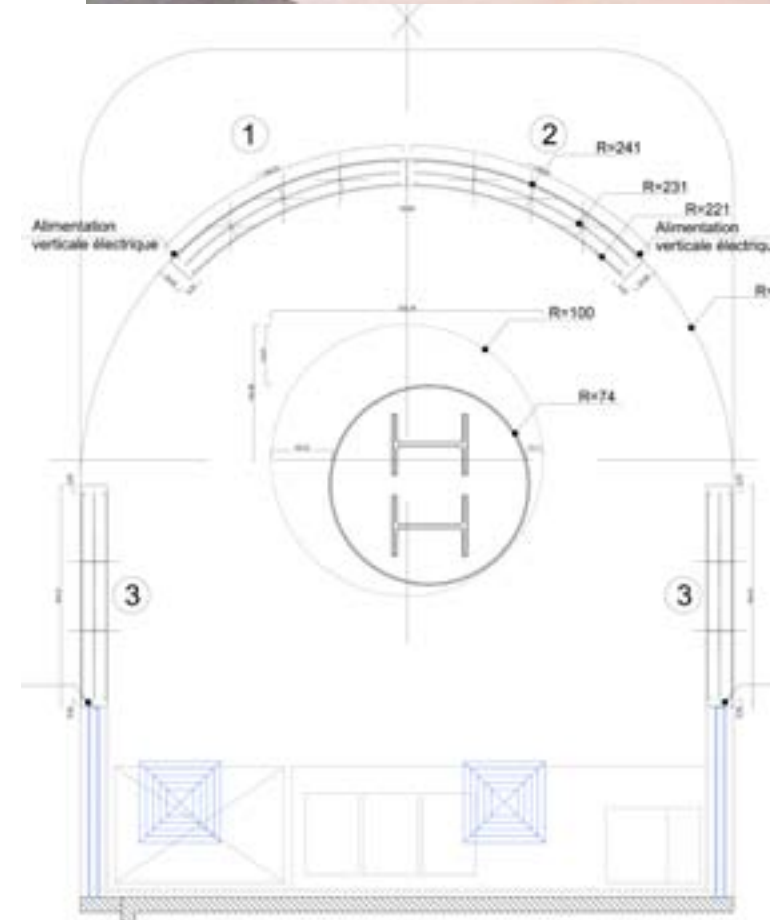
植物屏障

THE SCREEN OF PLANT



设计公司: Jardins de Babylon
项目面积: 20 m²
项目地址: 奥利机场贵宾候机室

Design Company: Jardins de Babylon
Area: 20 m² par face
Site: Airport VIP Lounge, Orly



本项目位于奥利机场的贵宾候机室内，这种镂空的网格设计巧妙地隔开了休息区与烹饪区，使得两个区域空间相互开放而又共享灯光，显得更宽敞更明亮。

设计细节：

每一个植物屏障都由一个用于种植的聚氯乙烯网格和一个带有溢出收集装置的灌溉系统组成。而屏障的外立面则由漆白的钢制网格构成。

Installed in a VIP Lounge in the Orly airport, this screen of plant allows creating a separation between the part relaxation and the part cooks. This openwork design brings of the transparency and the lightness to the place.

Design Details:

Every screen of plants consists of a structure PVC openwork (for the part plantation) and of a splash container with a system of integrated irrigation. The white part, the facing, is in lacquered white openwork sheet steel.

植被构成:
玲珑冷水花
菱叶白粉藤
小叶喜林芋
吊兰
凤尾蕨
台湾山苏花
天门冬
波斯顿蕨
蓝星粗脉蕨
果芋

Plants List:
Soleirolia soleirolii (Req.) Dandy
Cissus rhombifolia
Philodendron scandens
Chlorophytum comosum (Thunb.) Baker
Pteris
Asplenium nidus L.
Asparagus cochinchinensis (Lour.) Merr.
Nephrolepis exaltata (L.)Schott.cv.Bostoniensis
Phlebodium aureum 'Blue Star'
Syngonium



植物柱

THE PLANT COLUMNS



设计公司：Jardins de Babylon

面积：40 m²(三个植物柱)

项目地址：捷克共和国首都布拉格的 Novy Smichov 购物中心

Design Company: Jardins de Babylon

Area: Tree columns 40 m²

Site: Shopping Center in Novy Smichov to Praha in Czech Republic

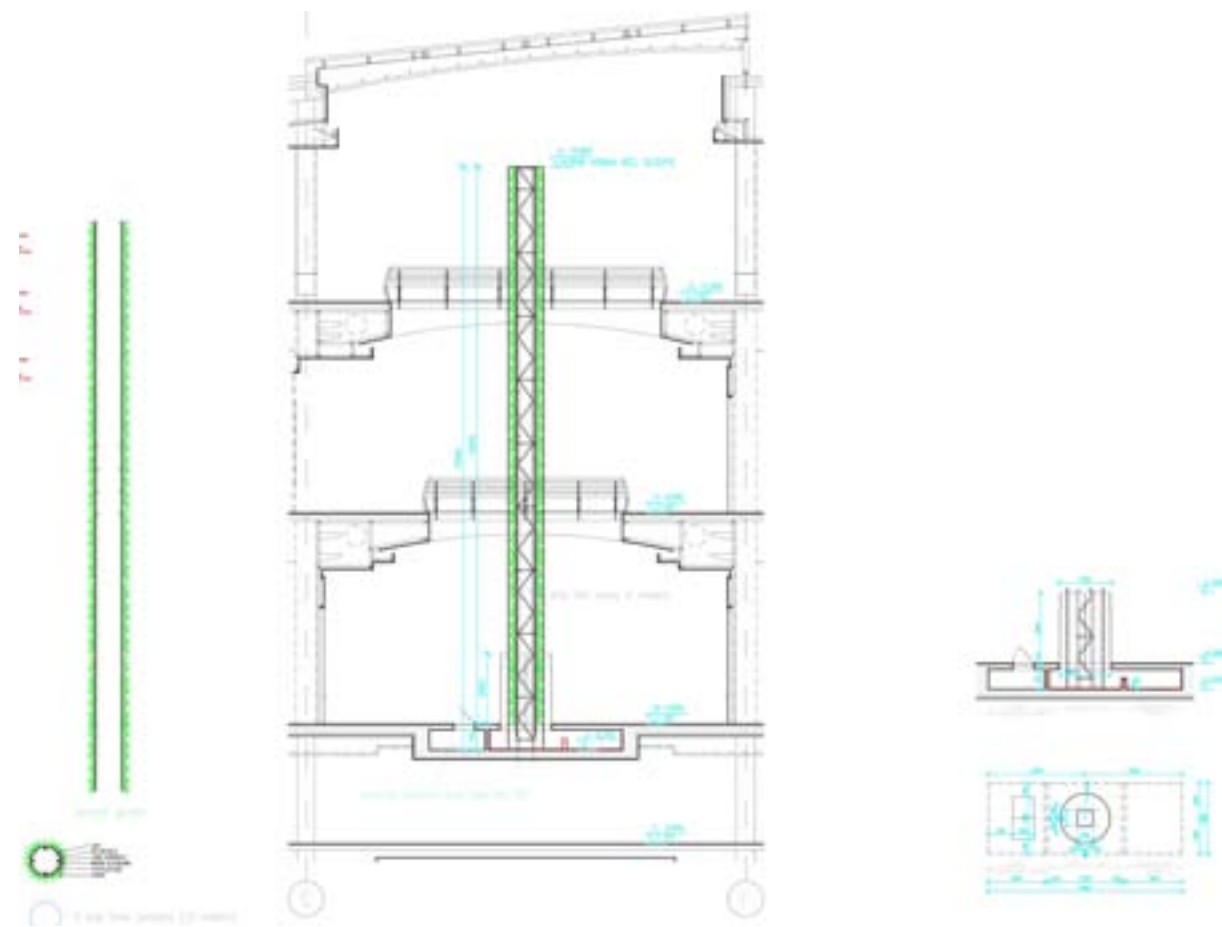


本项目是一个改造工程，其中一个项目就是为 Novy Smichov 购物中心中庭的三根柱子做垂直绿化。在深入地认识这些柱子的结构和购物中心的动线设计以后，设计师充分利用建筑内部的任何一个高度的观景视角，让顾客在购物的过程中始终围绕着植物柱。考虑到植物配置的问题，设计师给植物柱设计了一个螺旋上升的形状，且不同高度种有不一样的植物。这一微小的设计能够凸显购物中心内部的视觉高度，同时使得在任何高度观赏植物柱都能取得同样的韵律感。

设计细节：

植物柱的整体结构是由 4 根管道组合而成的独立金属框架和箍筋构成，外立面覆盖着加热成形的聚氯乙烯防水面板。面板上还要铺四层吸水织物才能种植植物，实际上只需要在织物的第一层种植。远程灌溉系统控制植物柱日常的浇水和施肥，由于所有灌溉用水都是从上往下流动，最终流入柱子底部的池塘里，所以能减少灌溉用水的浪费。





The renovation of the shopping mall dragged the creation of three columns situated in the central shopping center. By realizing these columns, we knew how to use all the height of the building while answering a problem of footprint. Indeed, it was essential that the customers can easily circulate around them. Concerning the plantation, a similar design in the form of spiral stressing the effect of height was designed for three columns at the level of the choice of vegetables to give a rhythmic of all the points of view onto all the height of the building.

Design Details:

The vegetable columns are constituted by a free standing metallic structure of 4 tubes and by arranged hoopings all the meters, the whole forming a metallic pillar. This pillar is covered with plates PVC thermoformed allowing the waterproofness of the plant wall. Finally, 4 layers of hydrophilic fabric are of use as substratum (support) to the implanting of plants. The last stage, the plantation, the simple section is made on the first layer of fabric allowing the setting-up of vegetables. A system of automatic watering managed at a remotely allows the regular control of the contributions in water and in fertilizer of columns. All the used water is got back below columns by a pond, limiting considerably the use of the water for the vegetable columns.

植被构成:
吊兰
仙羽蔓绿绒
袖珍椰子
刚果红蔓绿绒
天门冬
八角金盘

Plants List:
Chlorophytum comosum (Thunb.) Baker
Philodendron cv.Xanadu
Chamaedorea elegans
Philodendron 'Congo Red'
Asparagus cochinchinensis (Lour.) Merr.
Fatsia japonica (Thunb.) Decne. et Planch.

